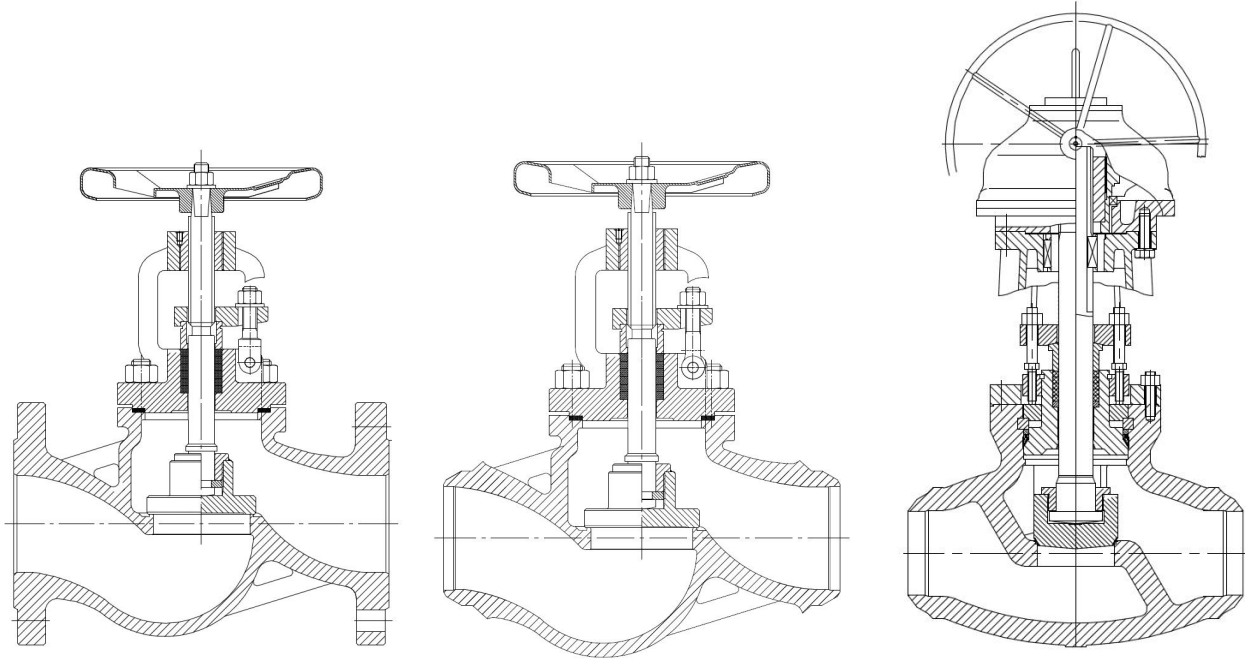


DIN High-pressure globe valve**Fig.128****DN50-DN300****PN63, PN100, PN160****Body:1.0619N, 1.7357, 1.4408****Design features**

- Straight type, Outside screw and yoke, Rising stem, Rising handwheel, Loose disc
- Pressure self-sealing bonnet for PN160
- ANSI version connection available: ASME B16.5 flanged end, ASME B16.25 Butt welded end
- Fire safe per EN ISO 10497 applicable

Applications

Fig. 128 is design guarantees reliable and excellent protections against leaks and severe condition. The valve is suitable for water, gas, oil and other non aggressive media depending on body material. The fields of application are chemical and petrochemical industries, power plants, ship building and other.

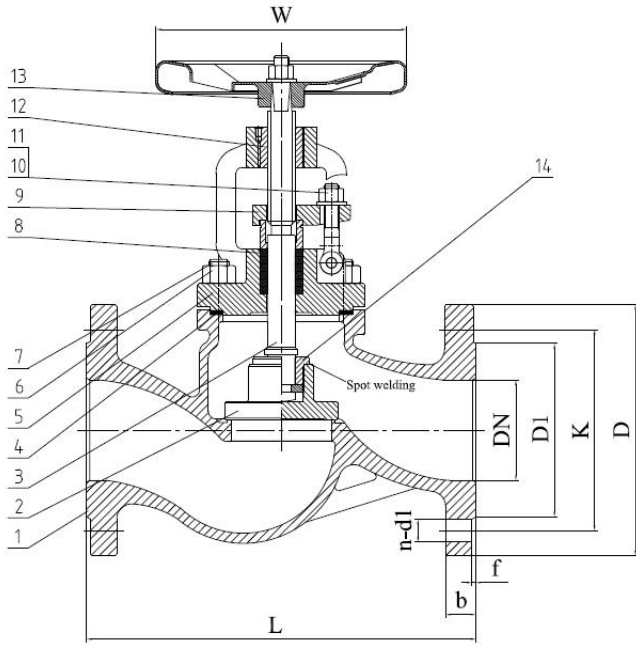


FIG.	Pressure	Material	Range
136.128	PN63	1.0619N	DN15-DN300
176.128	PN63	1.7357	DN15-DN300
156.128	PN63	1.4408	DN15-DN300
137.128	PN100	1.0619N	DN15-DN300
177.128	PN100	1.7357	DN15-DN300
157.128	PN100	1.4408	DN15-DN300

Design acc. :
AD 2000 A4
ATEX 2014/34/E
DIN EN 13709
Face to face : DIN EN 558-1,Ser.2(F2)
Flange end : DIN EN 1092-1.
Test acc. : DIN EN 12266.

Material list

NO.	Part	Material		
		FIG. 136.128 / 137.128	FIG.176.128 / 177.128	FIG.156.128 / 157.128
1	Body	1.0619N	1.7357	1.4408
1.1	Body seat	13%Cr/Stellite	13%Cr/Stellite	1.4408/Stellite
2	Disc	1.0619N	1.7357	1.4408
2.2	Disc seat	13%Cr/Stellite	13%Cr/Stellite	1.4408/Stellite
3	Stem	1.4021	1.4021	1.4401
4	Gasket	1.4301+ Graphite	1.4301+ Graphite	1.4401+ Graphite
5	Bonnet	1.0619N	1.7357	1.4408
6	Nut	1.1181	1.7218	A4
7	Bolt	1.7225	1.7709	A4-70
8	Packing	Graphite	Graphite	Graphite
9	Packing gland	1.0619N	1.7357	1.4408
10	Gland nut	1.1181	1.7218	A4
11	Eyelet bolt	1.7225	1.7709	A4-70
12	Stem nut	GGG 40.3	GGG 40.3	GGG 40.3
13	Handwheel	GGG 40.3	GGG 40.3	GGG 40.3
14	Disc nut	1.4021	1.4021	1.4401

Dimension list

PN	DN	L	D	K	D1	f	b	n	d1	H≈	W	Weight (Kg)≈
63	15	210	105	75	45	2	20	4	14	218	150	9
	20	230	130	90	58	2	22	4	18	218	150	11
	25	230	140	100	68	2	24	4	18	218	150	12
	32	260	155	110	78	2	26	4	22	282	200	20
	40	260	170	125	88	3	28	4	22	282	200	22.5
	50	300	180	135	102	3	26	4	22	370	200	28
	65	340	205	160	122	3	26	8	22	474	225	48
	80	380	215	170	138	3	28	8	22	440	250	56
	100	430	250	200	162	3	30	8	26	525	300	82
	150	550	345	280	218	3	36	8	33	620	500	154
	200	650	415	345	285	3	42	12	36	910	600	240
	250	775	470	400	345	3	46	12	36	949	700	319
	300	900	530	460	410	4	52	12	36	1032	700	632

PN	DN	L	D	K	D1	f	b	n	d	H≈	W	Weight (Kg)≈
100	15	210	105	75	45	2	20	4	14	218	150	9
	20	230	130	90	58	2	22	4	18	218	150	11
	25	230	140	100	68	2	24	4	18	218	150	12
	32	260	155	110	78	2	26	4	22	282	200	20
	40	260	170	125	88	3	28	4	22	282	200	22.5
	50	300	195	145	102	3	30	4	26	462	200	36
	65	340	220	170	122	3	34	8	26	540	225	70
	80	380	230	180	138	3	36	8	26	585	250	85
	100	430	265	210	162	3	40	8	30	670	300	123
	150	550	355	290	218	3	44	12	33	886	500	404
	200	650	430	360	285	3	52	12	36	932	600	450
	250	775	505	430	345	3	60	12	39	1040	700	700
	300	900	585	500	410	4	68	16	42	1280	700	900

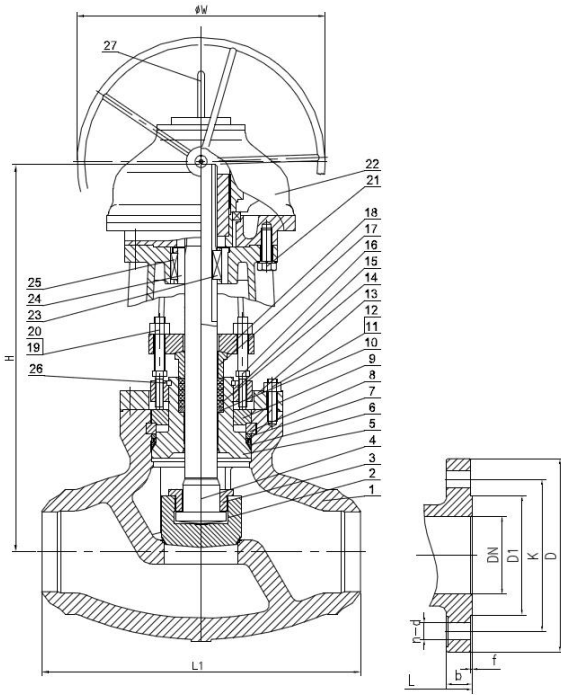


FIG.	Pressure	Material	Range
138.128	PN160	1.0619N	DN15-DN300
178.128	PN160	1.7357	DN15-DN300
158.128	PN160	1.4408	DN15-DN300

Design acc. :
AD 2000 A4
ATEX 2014/34/E
DIN EN 13709
Face to face : DIN EN 558-1,Ser.2(F2)
Flange end : DIN EN 1092-1.
Test acc. : DIN EN 12266.

Dimension list

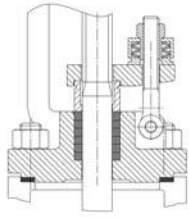
PN	DN	L	D	K	D1	f	b	n	d	H≈	W	Weight (Kg)≈
160	15	210	105	75	45	2	20	4	14	218	150	9
	20	230	130	90	58	2	22	4	18	218	150	11
	25	230	140	100	68	2	24	4	18	218	150	12
	32	260	155	110	78	2	26	4	22	282	200	20
	40	260	170	125	88	3	28	4	22	282	200	22.5
	50	300	195	145	102	3	30	4	26	600	200	95
	65	340	220	170	122	3	34	8	26	660	250	138
	80	380	230	180	138	3	36	8	26	665	300	122
	100	430	265	210	162	3	40	8	30	800	400	195
	150	550	355	290	218	3	50	12	33	1108	500	435
	200	650	430	360	285	3	60	12	36	1184	700	730
	250	775	515	430	345	3	68	12	42	/	700	980
	300	900	585	500	410	4	78	16	42	/	800	1680

*L1 is customizable per customer requirements.

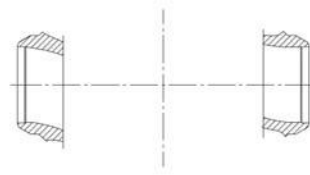
Material list

NO.	Part	Material		
		FIG. 138.128	FIG. 178.128	FIG.158.128
1	Body	1.0619+STL	1.7357+STL	1.4408+STL
2	Disc	1.4006+STL	1.7335+STL	1.4401+STL
3	Disc nut	1.4006	1.4006	1.4401
4	Stem	1.4021	1.4006	1.4401
5	Bonnet	1.4006	1.7335	1.4401
6	Pressure seal ring	1.4021	1.4306	1.4401
7	Antiextrusion ring	1.4021	1.4006	1.4401
8	Segment ring	1.4021	1.4006	1.4401
9	Support plate	C35	C35	1.4301
10	Packing washer	1.4021	1.4006	1.4401
11	Yoke bolt	GC	GC	A4-70
12	Yoke bolt nut	YK	YK	A4
13	Yoke arm	1.0619	1.0619	1.4408
14	Packing	Braided graphite & Die formed graphite ring	Braided graphite & Die formed graphite ring	Braided graphite & Die formed graphite ring
15	Plate	C35	C35	1.4301
16	Screw	GC	GC	A4-70
17	Gland	1.4021	1.4006	1.4401
18	Gland flange	1.0460	1.0460	1.4401
19	Eye bolt	GC	GC	A4-70
20	Eye bolt nut	YK	YK	A4
21	Screw	GC	GC	A4-70
22	Gear operation	Assembly	Assembly	Assembly
23	Key	1.4021	1.4006	1.4401
24	Bushing	1.4021	1.4006	1.4401
25	Key	1.4021	1.4006	1.4401
26	Half ring	1.4021	1.4006	1.4401
27	Indicator	C35	C35	1.4301

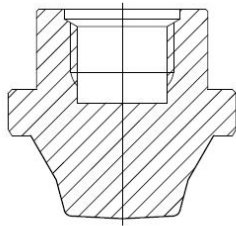
Available



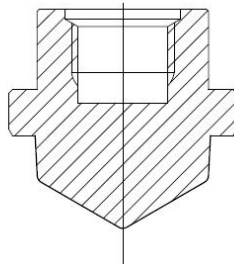
Spring living loaded system for packing



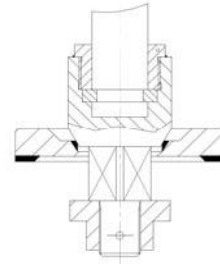
BW end acc. to EN 12627



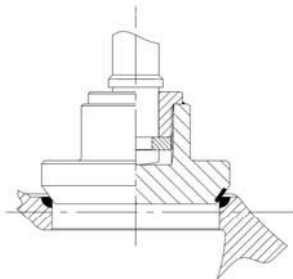
Throttling plug



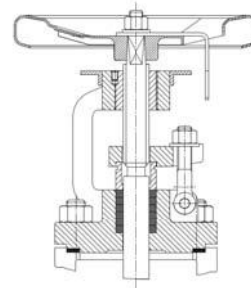
Control plug
equal percentage



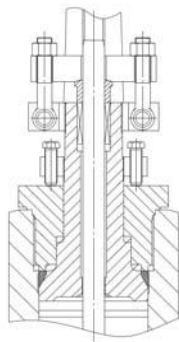
Balancing disc



Isolation plug with marginal seat



Position indicator



Pressure self-sealing bonnet