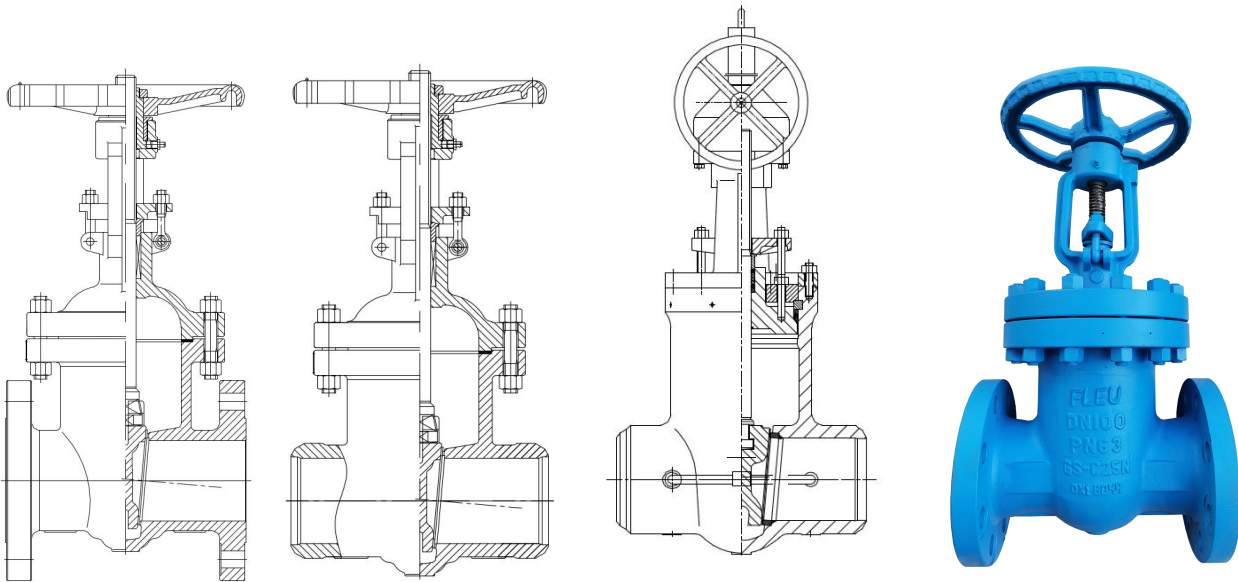


DIN High-pressure gate valve**Fig.036, 037, 038****DN50-DN400****PN63, PN100, PN160****Body:1.0619N, 1.7357, 1.4408****Design features**

- Round body, Outside screw and yoke, Rising stem, Non rising handwheel, Flexible wedge
- Pressure self-sealing bonnet or bolted bonnet for PN160
- ANSI version connection available: ASME B16.5 flanged end, ASME B16.25 Butt welded end
- Fire safe per EN ISO 10497 applicable

Applications

Fig.036.037.038 is design guarantees reliable and excellent protections against leaks and severe condition. The valve is suitable for water, gas, oil and other non aggressive media depending on body material. The fields of application are chemical and petrochemical industries, power plants, ship building and other.

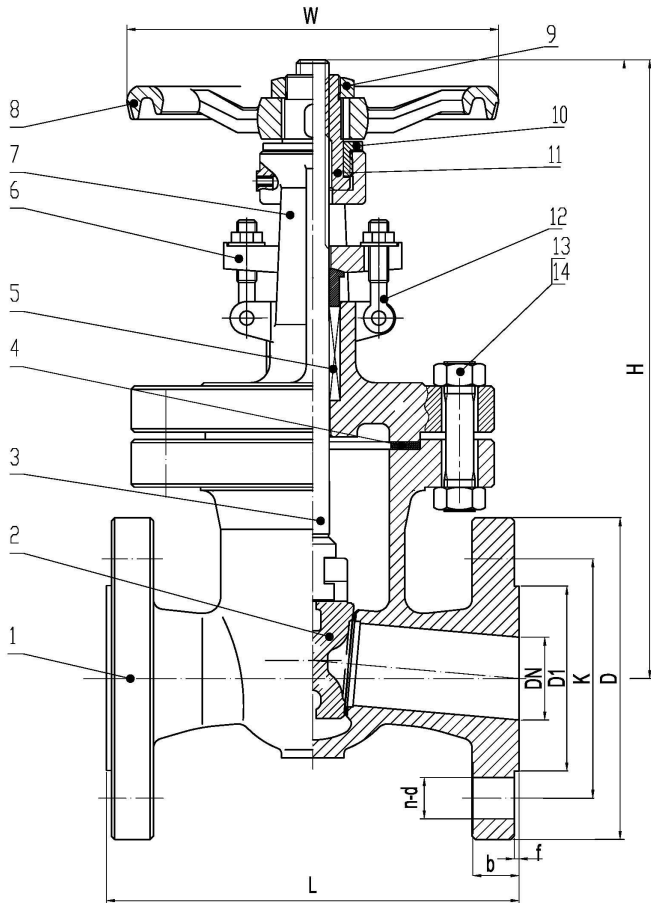


FIG.	Pressure	Material	Range
136.036	PN63	1.0619N	DN50-DN400
176.036	PN63	1.7357	DN50-DN400
156.036	PN63	1.4408	DN50-DN400
137.037	PN100	1.0619N	DN50-DN400
177.037	PN100	1.7357	DN50-DN400
157.037	PN100	1.4408	DN50-DN400

Design acc. : DIN EN 1984
Face to face : DIN EN 558-1,Ser.26(F7)
Flange end : DIN EN 1092-1.
Test acc. : DIN EN 12266.

Material list

NO.	Part	Material		
		FIG. 136.036 /137.037	FIG. 176.036 /177.037	FIG.156.036 /157.037
1	Body	1.0619N	1.7357	1.4408
1.1	Body seat	13%Cr/Stellite	13%Cr/Stellite	1.4408/Stellite
2	Wedge	1.0619N	1.7357	1.4408
2.2	Wedge seat	13%Cr/Stellite	13%Cr/Stellite	1.4408/Stellite
3	Stem	1.4021	1.4021	1.4401
4	Gasket	1.4301+ Graphite	1.4301+ Graphite	1.4401+ Graphite
5	Bonnet	1.0619N	1.7357	1.4408
6	Nut	1.1181	1.7218	A4
7	Bolt	1.7225	1.7709	A4-70
8	Packing	Graphite	Graphite	Graphite
9	Packing gland	1.0619N	1.7357	1.4408
10	Gland nut	1.1181	1.7218	A4
11	Eyelet bolt	1.7225	1.7709	A4-70
12	Stem nut	GGG 40.3	GGG 40.3	GGG 40.3
13	Gland	1.0460	1.0460	1.0460
14	Handwheel	GGG 40.3	GGG 40.3	GGG 40.3

Dimension list

PN	DN	L	D	K	D1	f	b	n	d	W	Weight (Kg)≈
63	50	250	180	135	102	3	26	4	22	200	30
	65	290	205	160	122	3	26	8	22	250	45
	80	310	215	170	138	3	28	8	22	250	57
	100	350	250	200	162	3	30	8	26	400	88
	150	450	345	280	218	3	36	8	33	500	147
	200	550	415	345	285	3	42	12	36	600	219
	250	650	470	400	345	3	46	12	36	700	368
	300	750	530	460	410	4	52	16	36	700	522
	350	850	600	525	465	4	56	16	39	800	694
	400	950	670	585	535	4	60	16	42	1000	1080

PN	DN	L	D	K	D1	f	b	n	d	W	Weight (Kg)≈
100	50	250	195	145	102	3	30	4	26	200	45
	65	290	220	170	122	3	34	8	26	250	55
	80	310	230	180	138	3	36	8	26	250	76
	100	350	265	210	162	3	40	8	30	400	127
	150	450	355	290	218	3	36	12	33	500	277
	200	550	430	360	285	3	42	12	36	600	485
	250	650	505	430	345	3	46	12	39	700	754
	300	750	585	500	410	4	52	16	42	700	936
	350	850	655	560	465	4	56	16	39	800	1316
	400	950	715	620	535	4	64	16	48	1000	1672

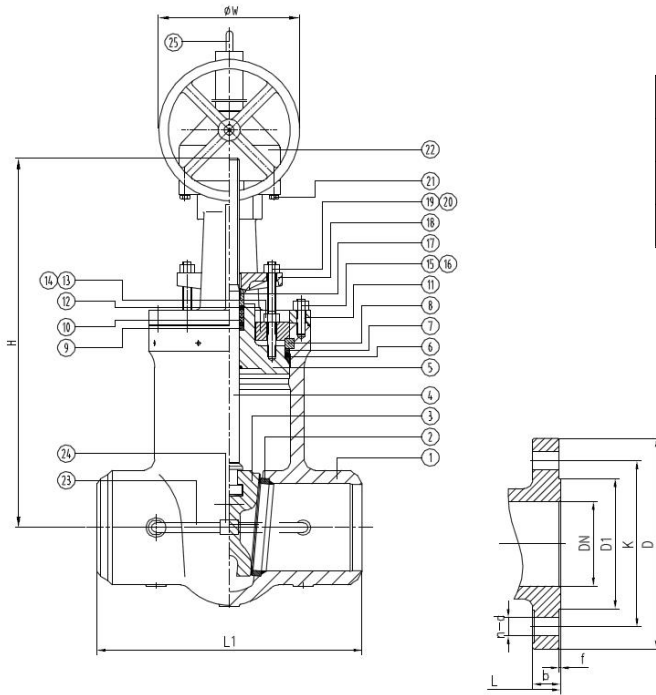


FIG.	Pressure	Material	Range
138.038	PN160	1.0619N	DN50-DN300
178.038	PN160	1.7357	DN50-DN300
158.038	PN160	1.4408	DN50-DN300

Design acc. : DIN EN 1984
Face to face : DIN EN 558-1,Ser.26(F7)
BW end : EN 12627
Test acc. : DIN EN 12266.

Dimension list

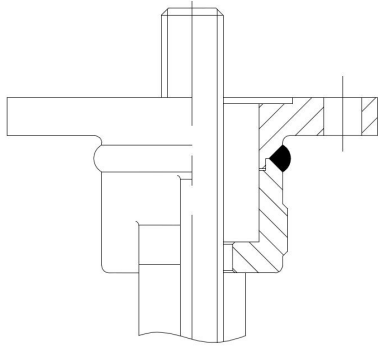
PN	DN	L	D	K	D1	f	b	n	d	W	Weight (Kg)≈
160	50	300	195	145	102	3	30	4	26	200	92
	65	360	220	170	122	3	34	8	26	250	108
	80	390	230	180	138	3	36	8	26	250	125
	100	450	265	210	162	3	40	8	30	400	194
	150	600	355	290	218	3	50	12	33	500	378
	200	750	430	360	285	3	60	12	36	600	635
	250	900	515	430	345	3	68	12	42	700	900
300	1050	585	500	410	4	78	16	42	700	1550	

*L1 is customizable per customer requirements.

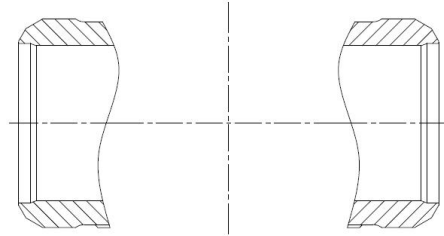
Material list

NO.	Part	Material		
		FIG. 138.038	FIG. 178.038	FIG.158.038
1	Body	1.0619	1.7357	1.4408
2	Seat	1.4006+STL	1.7335+STL	1.4401+STL
3	Wedge	1.0619	1.7357+STL	1.4408+STL
4	Stem	1.4021	1.4006	1.4401
5	Bonnet	1.4006	1.7335	1.4401
6	Pressure seal ring	1.4021	1.4306	1.4401
7	Antiextrusion ring	1.4021	1.4006	1.4401
8	Segment ring	1.4021	1.4006	1.4401
9	Packing washer	1.4021	1.4006	1.4401
10	Packing	Braided graphite & Die formed graphite ring	Braided graphite & Die formed graphite ring	Braided graphite & Die formed graphite ring
11	Yoke arm	1.0619	1.0619	1.4408
12	Support plate	1.1181	1.1181	A4-70
13	Bonnet bolt	GC	1.7709	A4-70
14	Bonnet bolt nut	YK	1.7264	A4-70
15	Yoke bolt	GC	1.7709	A4-70
16	Yoke bolt nut	YK	1.7264	A4-70
17	Gland	1.0460	1.4006	1.4401
18	Gland flange	1.0619	1.0619	1.4408
19	Bolt	GC	1.7709	A4-70
20	Nut	YK	1.7264	A4-70
21	Screw	GC	Carbon steel	A4
22	Gear operation	Assembly	Assembly	Assembly
23	Bypass pipe	C35	1.0451	1.4401
24	Bypass valve	1.4006	1.7335	1.4401
25	Indicator	C35	C35	1.4301

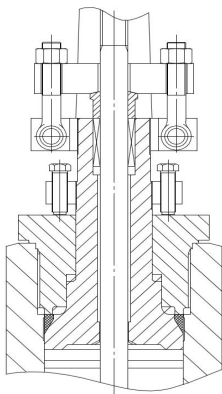
Available



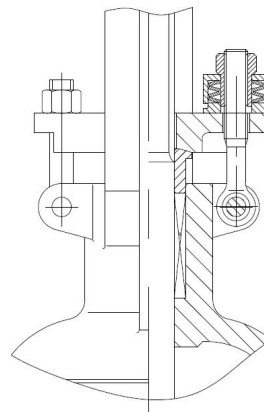
ISO top flange



BW end acc. to EN 12627



Pressure self-sealing bonnet for PN160



Spring living loaded system of packing