

**Design acc. to :**

**AD 2000 A4,  
ATEX 2014/34/EU  
EN 12516**

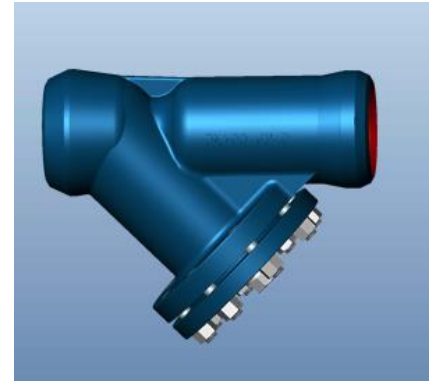
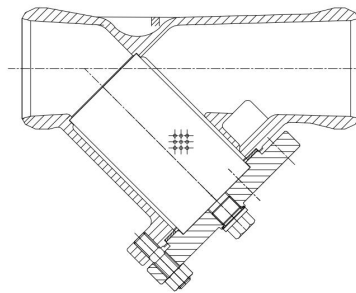
**End to end : DIN EN 12982 Ser.1.**

**BW end : DIN EN 12627 or DIN 3239**

**Test acc. : EN 12266-1**

**Ta-Luft Gasket**

**Body : 1.0619N /1.4408 /1.4539**



**FIG : 350-BW**

**FIG : 350-BW**

**Screen:**



**≤DN32**



**>DN32**

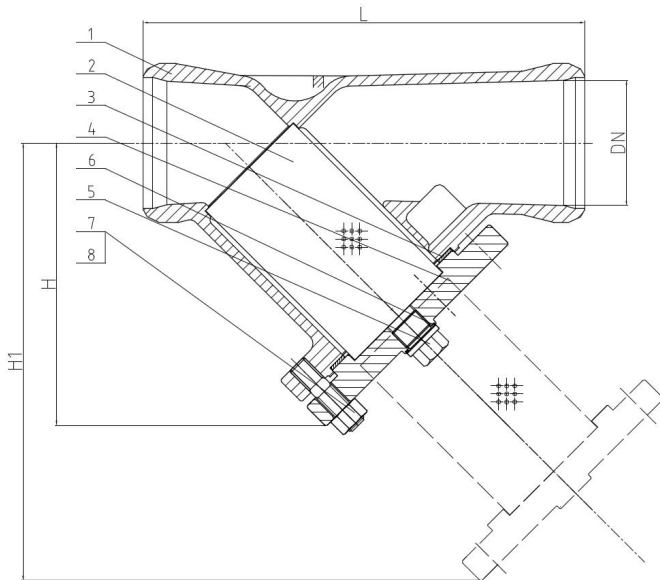
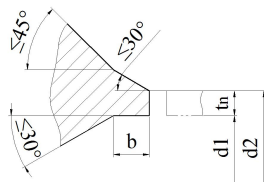


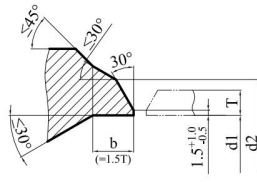
FIG.	Pressure	Material	Range
133.350-BW	PN16	1.0619N	DN15-DN500
153.350-BW	PN16	1.4408	DN15-DN500
503.350-BW	PN16	1.4539	DN15-DN500
134.350-BW	PN25	1.0619N	DN15-DN500
154.350-BW	PN25	1.4408	DN15-DN500
504.350-BW	PN25	1.4539	DN15-DN500
135.350-BW	PN40	1.0619N	DN15-DN500
155.350-BW	PN40	1.4408	DN15-DN500
505.350-BW	PN40	1.4539	DN15-DN500

**Design acc. to: AD 2000 A4  
ATEX 2014/34/EU  
EN 12516  
End to end : EN 12982 Ser.1  
BW ends : EN 12627 Fig1/Fig2  
Test acc. : EN 12266-1  
TA-Luft Gasket**



EN 12627 Fig1

tn ≤ 4mm DN15 - DN80



EN 12627 Fig2

4mm < T ≤ 22mm DN100 - DN500

**Material list**

NO.	Part	Material		
		FIG. 153.350-BW / 154.350-BW / 155.350-BW	FIG. 133.350-BW / 134.350-BW / 135.350-BW	FIG. 503.350-BW / 504.350-BW / 505.350-BW
1	Body	1.4408	1.0619N	1.4539
2	Screen	1.4401	1.4301	1.4539
3	Body seal	1.4401+Graphite /PTFE	1.4301+Graphite /PTFE	1.4401+Graphite /PTFE
4	Bonnet	1.4408	1.0619N	1.4539
5	Screw	1.4401	1.4401 / 1.4301 / 1.4006	1.4539
6	Gasket	1.4401	1.4401 / 1.4301 / 1.4006	1.4539
7	Bolts	A4-70 / A2-70	1.7225(GC)	A4-70 / A2-70
8	Nuts	A4-70 / A2-70	1.1181(YK)	A4-70 / A2-70

**Dimension List**

PN	DN	d2	d1	b	For pipe	L	H	H1	Screen size (Φ × L1)	Screen mesh (square)	Screen wire size	Filter holder (square)	Holder Wire size	Weight (Kg)
40	15	22	17.3	3	Φ21.3 × 2	130	70	90	Φ22 × 46.5	0.6 × 0.6	Φ0.4	/	/	1.7
	20	28	22.3	4	Φ26.9 × 2.3	150	80	110	Φ24 × 56.5	0.6 × 0.6	Φ0.4	/	/	2.2
	25	35	28.5	4	Φ33.7 × 2.6	160	88	120	Φ32 × 61.5	0.8 × 0.8	Φ0.4	/	/	2.7
	32	44	37.2	4	Φ42.4 × 2.6	180	100	135	Φ38 × 72	0.8 × 0.8	Φ0.4	/	/	4.0
	40	50	43.1	4	Φ48.3 × 2.6	200	125	165	Φ46 × 92	0.8 × 0.8	Φ0.5	10 × 10	2 × 2	5.0
	50	62	53.9	5	Φ60.3 × 3.2	230	140	195	Φ55 × 104	0.8 × 0.8	Φ0.5	10 × 10	2 × 2	6.5

PN	DN	d2	d1	b	For pipe	L	H	H1	Screen size (Φ×L1)	Screen mesh (square)	Screen wire size	Filter holder (square)	Holder Wire size	Weight (Kg)
16	65	77	68.9	6	Φ76.1×3.6	290	170	255	Φ72×140	0.8×0.8	Φ0.5	10×10	2×2	9.3
	80	91	80.9	6	Φ88.9×4.0	310	190	285	Φ86×154	1.2×1.2	Φ0.5	10×10	2×2	13.9
	100	117	104.3	8	Φ114.3×5.0	350	225	325	Φ98×167.5	1.2×1.2	Φ0.5	10×10	2×2	23.4
	125	144	130.7	7	Φ139.7×4.5	400	260	380	Φ124×192	1.2×1.2	Φ0.5	10×10	2×2	30.6
	150	172	157.1	9	Φ168.3×5.6	480	320	490	Φ144×261	1.2×1.2	Φ0.5	10×10	2×2	52.5
	200	223	204.9	11	Φ219.1×7.1	600	420	620	Φ189×316.5	1.2×1.2	Φ0.5	10×10	2×2	111.7
	250	278	257.0	12	Φ273.0×8.0	730	495	720	Φ260×380	1.6×1.6	Φ0.5	10×10	2×2	154.1
	300	329	307.9	12	Φ323.9×8.0	850	615	936	Φ310×455	1.6×1.6	Φ0.5	10×10	2×2	156.4
	350	362	338.0	14	Φ355.6×8.8	980	725	1113	Φ355×550	1.6×1.6	Φ0.5	10×10	2×2	239
	400	413	384.4	17	Φ406.4×11.0	1100	835	1277	Φ402×625	1.6×1.6	Φ0.5	10×10	2×2	309
500	516	479.6	21.3	Φ508×14.2	1250	915	1375	Φ495×650	1.6×1.6	Φ0.5	10×10	2×2	509	

PN	DN	d2	d1	b	For pipe	L	H	H1	Screen size (Φ×L1)	Screen mesh (square)	Screen wire size	Filter holder (square)	Holder Wire size	Weight (Kg)
25	65	77	68.9	6	Φ76.1×3.6	290	170	255	Φ72×140	0.8×0.8	Φ0.5	10×10	2×2	9.3
	80	91	80.9	6	Φ88.9×4.0	310	190	285	Φ86×154	1.2×1.2	Φ0.5	10×10	2×2	13.9
	100	117	104.3	8	Φ114.3×5.0	350	225	325	Φ98×167.5	1.2×1.2	Φ0.5	10×10	2×2	23.4
	125	144	130.7	7	Φ139.7×4.5	400	260	380	Φ124×192	1.2×1.2	Φ0.5	10×10	2×2	30.6
	150	172	157.1	9	Φ168.3×5.6	480	320	490	Φ144×261	1.2×1.2	Φ0.5	10×10	2×2	52.5
	200	223	204.9	11	Φ219.1×7.1	600	420	620	Φ189×316.5	1.2×1.2	Φ0.5	10×10	2×2	111.7
	250	278	257.0	12	Φ273.0×8.0	730	495	720	Φ260×380	1.6×1.6	Φ0.5	10×10	2×2	154.1
	300	329	307.9	12	Φ323.9×8.0	850	615	936	Φ310×455	1.6×1.6	Φ0.5	10×10	2×2	156.4
	350	362	338.0	14	Φ355.6×8.8	980	725	1113	Φ355×550	1.6×1.6	Φ0.5	10×10	2×2	239
	400	413	384.4	17	Φ406.4×11.0	1100	835	1277	Φ402×625	1.6×1.6	Φ0.5	10×10	2×2	309
500	516	479.6	21.3	Φ508×14.2	1250	915	1375	Φ495×650	1.6×1.6	Φ0.5	10×10	2×2	509	

PN	DN	d2	d1	b	For pipe	L	H	H1	Screen size (Φ×L1)	Screen mesh (square)	Screen wire size	Filter holder (square)	Holder Wire size	Weight (Kg)
40	65	77	68.9	6	Φ76.1×3.6	290	170	255	Φ72×140	0.8×0.8	Φ0.5	10×10	2×2	9.3
	80	91	80.9	6	Φ88.9×4.0	310	190	285	Φ86×154	1.2×1.2	Φ0.5	10×10	2×2	13.9
	100	117	104.3	8	Φ114.3×5.0	350	225	325	Φ98×167.5	1.2×1.2	Φ0.5	10×10	2×2	23.4
	125	144	130.7	7	Φ139.7×4.5	400	260	380	Φ124×192	1.2×1.2	Φ0.5	10×10	2×2	30.6
	150	172	157.1	9	Φ168.3×5.6	480	320	490	Φ144×261	1.2×1.2	Φ0.5	10×10	2×2	52.5
	200	223	204.9	11	Φ219.1×7.1	600	420	620	Φ189×316.5	1.2×1.2	Φ0.5	10×10	2×2	111.7
	250	278	257.0	12	Φ273.0×8.0	730	495	720	Φ260×380	1.6×1.6	Φ0.5	10×10	2×2	154.1
	300	329	307.9	12	Φ323.9×8.0	850	615	936	Φ310×455	1.6×1.6	Φ0.5	10×10	2×2	156.4
	350	362	338.0	14	Φ355.6×8.8	980	725	1113	Φ355×550	1.6×1.6	Φ0.5	10×10	2×2	239
	400	413	384.4	17	Φ406.4×11.0	1100	835	1277	Φ402×625	1.6×1.6	Φ0.5	10×10	2×2	309
500	516	479.6	21.3	Φ508×14.2	1250	915	1375	Φ495×650	1.6×1.6	Φ0.5	10×10	2×2	509	

Note: pipe acc. to DIN2448/ ISO4200 outside diameter× wall thickness.