

**Design acc. to :**

**AD 2000 A4,**

**ATEX 2014/34/EU**

**EN 12516**

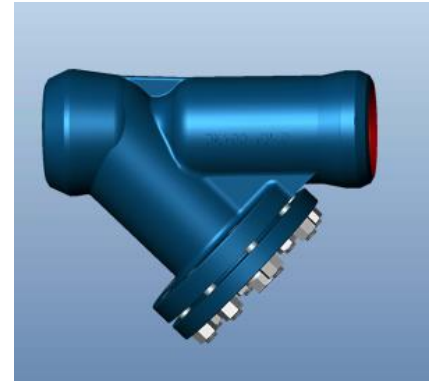
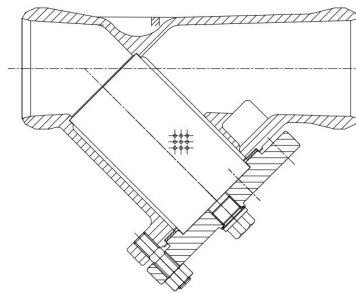
**End to end : DIN EN 12982 Ser.1.**

**BW end : DIN EN 12627 or DIN 3239**

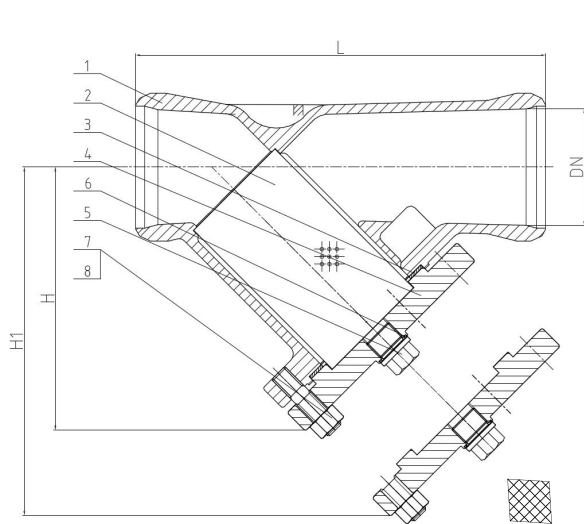
**Test acc. : EN 12266-1**

**Ta-Luft Gasket**

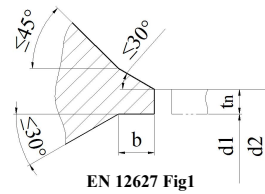
**Body : 1.0619N /1.4408**



**FIG : 350-BW**

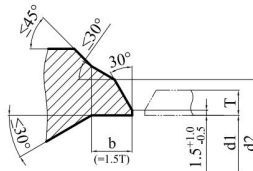


| FIG.       | Pressure | Material | Range      |
|------------|----------|----------|------------|
| 132.350-BW | PN10     | 1.0619N  | DN15-DN400 |
| 133.350-BW | PN16     | 1.0619N  | DN15-DN400 |
| 152.350-BW | PN10     | 1.4408   | DN15-DN400 |
| 153.350-BW | PN16     | 1.4408   | DN15-DN400 |



EN 12627 Fig1

tn ≤ 4mm DN15 - DN80



EN 12627 Fig2

**Design acc. to: AD 2000 A4  
ATEX 2014/34/EU  
EN 12516  
End to end : EN 12982 Ser.1  
BW ends : EN 12627 Fig1/Fig2  
Test acc. : EN 12266-1  
TA-Luft Gasket**

**Material list**

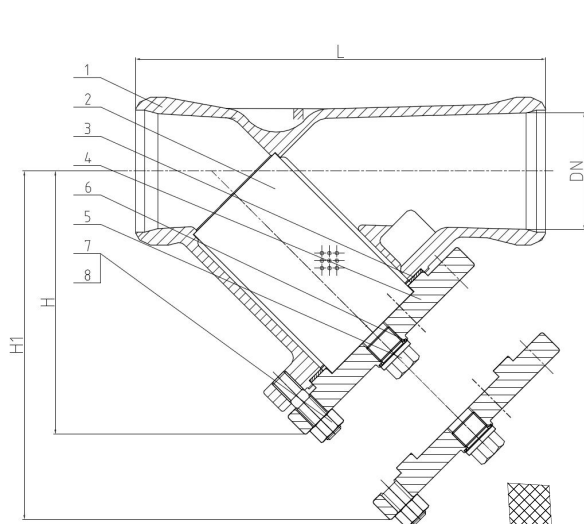
4mm < T ≤ 22mm DN100 - DN400

| NO. | Part      | Material                     |                              |
|-----|-----------|------------------------------|------------------------------|
|     |           | FIG. 152.350-BW / 153.350-BW | FIG. 132.350-BW / 133.350-BW |
| 1   | Body      | 1.4408                       | 1.0619N                      |
| 2   | Screen    | 1.4401                       | 1.4301                       |
| 3   | Body seal | TA-Luft Gasket               | TA-Luft Gasket               |
| 4   | Bonnet    | 1.4408                       | 1.0619N                      |
| 5   | Screw     | 1.4401                       | 1.4401                       |
| 6   | Gasket    | 1.4401                       | 1.4401                       |
| 7   | Bolts     | A4-70 / A2-70                | 1.7225(GC)                   |
| 8   | Nuts      | A4-70 / A2-70                | 1.1181(YK)                   |

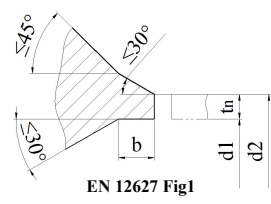
**Dimension List**

| PN    | DN  | d2  | d1    | b  | For pipe    | L    | H   | H1  | Screen size (Φ × L) | Screen mesh (square) | Screen wire size | Filter holder (square) | Holder Wire size | Weight (Kg) |
|-------|-----|-----|-------|----|-------------|------|-----|-----|---------------------|----------------------|------------------|------------------------|------------------|-------------|
| 10    | 200 | 223 | 204.9 | 11 | Φ219.1×7.1  | 600  | 420 | 620 | Φ189×316.5          | 1.2×1.2              | Φ0.5             | 10×10                  | 1×1              | 130.5       |
|       | 250 | 278 | 257.0 | 12 | Φ273.0×8.0  | 730  | 495 | 720 | /                   | 1.6×1.6              | Φ0.5             | 10×10                  | 1×1              | 180.5       |
|       | 300 | 329 | 307.9 | 12 | Φ323.9×8.0  | 850  | --  | --  | /                   | 1.6×1.6              | Φ0.5             | 10×10                  | 1×1              | --          |
|       | 350 | 362 | 338.0 | 14 | Φ355.6×8.8  | 980  | --  | --  | /                   | 1.6×1.6              | Φ0.5             | 10×10                  | 1×1              | --          |
|       | 400 | 413 | 384.4 | 17 | Φ406.4×11.0 | 1100 | --  | --  | /                   | 1.6×1.6              | Φ0.5             | 10×10                  | 1×1              | --          |
| 10/16 | 15  | 22  | 17.3  | 3  | Φ21.3×2     | 130  | 70  | 90  | Φ22×46.5            | 0.6×0.6              | Φ0.5             | /                      | /                | 3.3         |
|       | 20  | 28  | 22.3  | 4  | Φ26.9×2.3   | 150  | 80  | 110 | Φ24×56.5            | 0.6×0.6              | Φ0.5             | /                      | /                | 4.3         |
|       | 25  | 35  | 28.5  | 4  | Φ33.7×2.6   | 160  | 88  | 120 | Φ32×61.5            | 0.8×0.8              | Φ0.5             | /                      | /                | 5.3         |
|       | 32  | 44  | 37.2  | 4  | Φ42.4×2.6   | 180  | 100 | 135 | Φ38×72              | 0.8×0.8              | Φ0.5             | /                      | /                | 7.8         |
|       | 40  | 50  | 43.1  | 4  | Φ48.3×2.6   | 200  | 125 | 165 | Φ46×92              | 0.8×0.8              | Φ0.5             | 10×10                  | 1×1              | 9.2         |
|       | 50  | 62  | 53.9  | 5  | Φ60.3×3.2   | 230  | 140 | 195 | Φ55×104             | 0.8×0.8              | Φ0.5             | 10×10                  | 1×1              | 11.5        |
|       | 65  | 77  | 68.9  | 6  | Φ76.1×3.6   | 290  | 170 | 255 | Φ72×140             | 0.8×0.8              | Φ0.5             | 10×10                  | 1×1              | 15.5        |
|       | 80  | 91  | 80.9  | 6  | Φ88.9×4.0   | 310  | 190 | 285 | Φ86×154             | 1.2×1.2              | Φ0.5             | 10×10                  | 1×1              | 22.5        |
|       | 100 | 117 | 104.3 | 8  | Φ114.3×5.0  | 350  | 225 | 325 | Φ98×167.5           | 1.2×1.2              | Φ0.5             | 10×10                  | 1×1              | 31.5        |
|       | 125 | 144 | 130.7 | 7  | Φ139.7×4.5  | 400  | 260 | 380 | Φ124×192            | 1.2×1.2              | Φ0.5             | 10×10                  | 1×1              | 41.5        |
| 16    | 200 | 223 | 204.9 | 11 | Φ219.1×7.1  | 600  | 420 | 620 | Φ189×316.5          | 1.2×1.2              | Φ0.5             | 10×10                  | 1×1              | 130.5       |
|       | 250 | 278 | 257.0 | 12 | Φ273.0×8.0  | 730  | 495 | 720 | /                   | 1.6×1.6              | Φ0.5             | 10×10                  | 1×1              | 180.5       |
|       | 300 | 329 | 307.9 | 12 | Φ323.9×8.0  | 850  | --  | --  | /                   | 1.6×1.6              | Φ0.5             | 10×10                  | 1×1              | --          |
|       | 350 | 362 | 338.0 | 14 | Φ355.6×8.8  | 980  | --  | --  | /                   | 1.6×1.6              | Φ0.5             | 10×10                  | 1×1              | --          |
|       | 400 | 413 | 384.4 | 17 | Φ406.4×11.0 | 1100 | --  | --  | /                   | 1.6×1.6              | Φ0.5             | 10×10                  | 1×1              | --          |

Note: pipe acc. to DIN2448/ ISO4200 outside diameter × wall thickness.

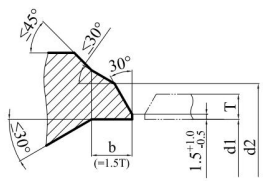


| FIG.       | Pressure | Material | Range      |
|------------|----------|----------|------------|
| 134.350-BW | PN25     | 1.0619N  | DN15-DN400 |
| 135.350-BW | PN40     | 1.0619N  | DN15-DN400 |
| 154.350-BW | PN25     | 1.4408   | DN15-DN400 |
| 155.350-BW | PN40     | 1.4408   | DN15-DN400 |



EN 12627 Fig1

tn ≤ 4mm DN15 - DN80



EN 12627 Fig2

4mm < T ≤ 22mm DN100 - DN400

**Design acc. to: AD 2000 A4**  
**ATEX 2014/34/EU**  
**EN 12516**  
**End to end : EN 12982 Ser.1**  
**BW ends : EN 12627 Fig1/Fig2**  
**Test acc. : EN 12266-1**  
**TA-Luft Gasket**

**Material list**

| NO. | Part      | Material                     |                              |
|-----|-----------|------------------------------|------------------------------|
|     |           | FIG. 154.350-BW / 155.350-BW | FIG. 134.350-BW / 135.350-BW |
| 1   | Body      | 1.4408                       | 1.0619N                      |
| 2   | Screen    | 1.4401                       | 1.4301                       |
| 3   | Body seal | TA-Luft Gasket               | TA-Luft Gasket               |
| 4   | Bonnet    | 1.4408                       | 1.0619N                      |
| 5   | Screw     | 1.4401                       | 1.4401                       |
| 6   | Gasket    | 1.4401                       | 1.4401                       |
| 7   | Bolts     | A4-70 / A2-70                | 1.7225(GC)                   |
| 8   | Nuts      | A4-70 / A2-70                | 1.1181(YK)                   |

**Dimension List**

| PN    | DN  | d2    | d1    | b           | For pipe    | L    | H   | H1  | Screen size (Φ×L) | Screen mesh (square) | Screen wire size | Filter holder (square) | Holder Wire size | Weight (Kg) |
|-------|-----|-------|-------|-------------|-------------|------|-----|-----|-------------------|----------------------|------------------|------------------------|------------------|-------------|
| 25    | 200 | 223   | 204.9 | 11          | Φ219.1×7.1  | 600  | 420 | 620 | Φ189×316.5        | 1.2×1.2              | Φ0.5             | 10×10                  | 1×1              | 135.0       |
|       | 250 | 278   | 257.0 | 12          | Φ273.0×8.0  | 730  | 495 | 720 | /                 | 1.6×1.6              | Φ0.5             | 10×10                  | 1×1              | 180.5       |
|       | 300 | 329   | 307.9 | 12          | Φ323.9×8.0  | 850  | --  | --  | /                 | 1.6×1.6              | Φ0.5             | 10×10                  | 1×1              | --          |
|       | 350 | 362   | 338.0 | 14          | Φ355.6×8.8  | 980  | --  | --  | /                 | 1.6×1.6              | Φ0.5             | 10×10                  | 1×1              | --          |
|       | 400 | 413   | 384.4 | 17          | Φ406.4×11.0 | 1100 | --  | --  | /                 | 1.6×1.6              | Φ0.5             | 10×10                  | 1×1              | --          |
| 25/40 | 15  | 22    | 17.3  | 3           | Φ21.3×2     | 130  | 70  | 90  | Φ22×46.5          | 0.6×0.6              | Φ0.5             | /                      | /                | 3.3         |
|       | 20  | 28    | 22.3  | 4           | Φ26.9×2.3   | 150  | 80  | 110 | Φ24×56.5          | 0.6×0.6              | Φ0.5             | /                      | /                | 4.3         |
|       | 25  | 35    | 28.5  | 4           | Φ33.7×2.6   | 160  | 88  | 120 | Φ32×61.5          | 0.8×0.8              | Φ0.5             | /                      | /                | 5.3         |
|       | 32  | 44    | 37.2  | 4           | Φ42.4×2.6   | 180  | 100 | 135 | Φ38×72            | 0.8×0.8              | Φ0.5             | /                      | /                | 7.8         |
|       | 40  | 50    | 43.1  | 4           | Φ48.3×2.6   | 200  | 125 | 165 | Φ46×92            | 0.8×0.8              | Φ0.5             | 10×10                  | 1×1              | 9.2         |
|       | 50  | 62    | 53.9  | 5           | Φ60.3×3.2   | 230  | 140 | 195 | Φ55×104           | 0.8×0.8              | Φ0.5             | 10×10                  | 1×1              | 11.5        |
|       | 65  | 77    | 68.9  | 6           | Φ76.1×3.6   | 290  | 170 | 255 | Φ72×140           | 0.8×0.8              | Φ0.5             | 10×10                  | 1×1              | 16.5        |
|       | 80  | 91    | 80.9  | 6           | Φ88.9×4.0   | 310  | 190 | 285 | Φ86×154           | 1.2×1.2              | Φ0.5             | 10×10                  | 1×1              | 23.0        |
|       | 100 | 117   | 104.3 | 8           | Φ114.3×5.0  | 350  | 225 | 325 | Φ98×167.5         | 1.2×1.2              | Φ0.5             | 10×10                  | 1×1              | 34.0        |
|       | 125 | 144   | 130.7 | 7           | Φ139.7×4.5  | 400  | 260 | 380 | Φ124×192          | 1.2×1.2              | Φ0.5             | 10×10                  | 1×1              | 61.0        |
| 40    | 150 | 172   | 157.1 | 9           | Φ168.3×5.6  | 480  | 320 | 490 | Φ144×261          | 1.2×1.2              | Φ0.5             | 10×10                  | 1×1              | 92.0        |
|       | 200 | 223   | 204.9 | 11          | Φ219.1×7.1  | 600  | 420 | 620 | Φ189×316.5        | 1.2×1.2              | Φ0.5             | 10×10                  | 1×1              | 135.0       |
|       | 250 | 278   | 257.0 | 12          | Φ273.0×8.0  | 730  | 495 | 720 | /                 | 1.6×1.6              | Φ0.5             | 10×10                  | 1×1              | 210.5       |
|       | 300 | 329   | 307.9 | 12          | Φ323.9×8.0  | 850  | --  | --  | /                 | 1.6×1.6              | Φ0.5             | 10×10                  | 1×1              | --          |
|       | 350 | 362   | 338.0 | 14          | Φ355.6×8.8  | 980  | --  | --  | /                 | 1.6×1.6              | Φ0.5             | 10×10                  | 1×1              | --          |
| 400   | 413 | 384.4 | 17    | Φ406.4×11.0 | 1100        | --   | --  | /   | 1.6×1.6           | Φ0.5                 | 10×10            | 1×1                    | --               |             |

Note: pipe acc. to DIN2448/ ISO4200 outside diameter× wall thickness.