

# FLEU

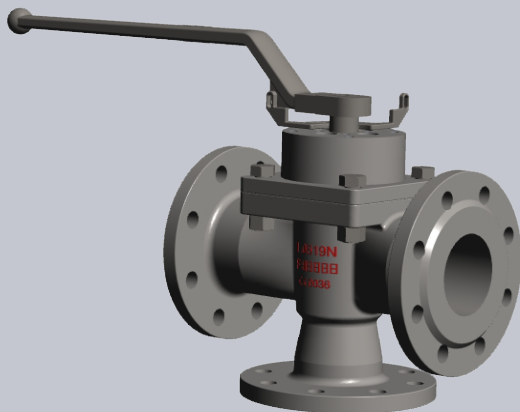
Chemical

## 3-way sleeved plug valves

Patented design

TA-Luft 2021 , ISO 15848-1 CO3 -60 200

0 Leakage after 100 000 cycle



*FLEU*

3-Way Sleeved Plug Valves

[www.fleu-valve.com](http://www.fleu-valve.com)

## Applications **CHEMICAL**

Chemicals TDI, MDI, Ethylenoxid

Chlor, Alkali, Pulp and Paper, desalination of seawater

Polymers, Polypropylene plant

ammonia, Fertilizers

Hydrofluoric Acid

## Technical Details

Body Materials	Carbon Steel 1.0619, ASTM A216 WCB, 1.1138, ASTM A352 LCC/LCB Stainless Steel 1.4408, ASTM A351 CF8M, 1.4308, ASTM A351 CF8
Size range	1/2" - 24" / DN15 - DN600
Pressure range	150lbs - 300lbs / PN10 - PN40
Temperature range	-50 up to +280
Connection	Flanged End, Weld End
Options	Different sleeve and packing materials, Firesafe, Actuation, Full bore( DN20) and reduced bore( DN25)
Certificates	ISO15848-1 (BH CO3 -60°C 200°C SSA 0), TA-Luft 2021, DGRL 2014/68/EU, AD 2000, API607

## Design features

1. Camprofiled body cover joint gasket.
2. 360° port lips on body prevent cold flow and deformation of the sleeve, eliminating the chances that the sleeve will rotate during thermal cycling.
3. Pressure relief hole depending on condition as for Hydrofluoric Acid, Chlor, Oleum.
4. With locking device.
5. 5"/DN125 and larger: Gear box.
6. Dead cavity free.
7. Maintenance free, self-lubrication, these valves prevent accumulation or contamination of process media.
8. Plug adjustability.
9. Mounting-flange for actuators acc. to DIN ISO 5211.
10. Anti-static design.

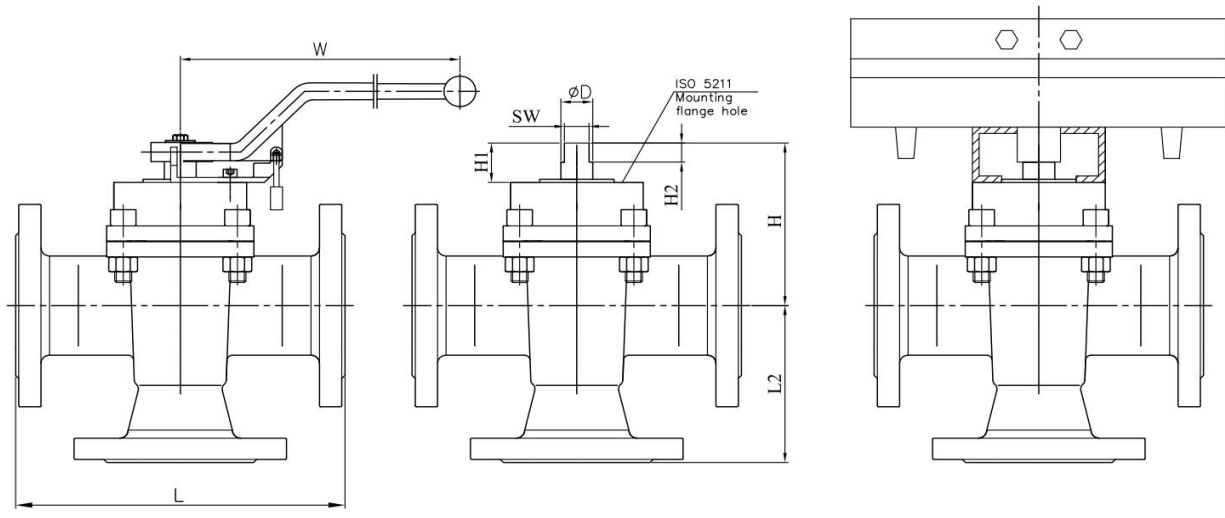
## Design standards for DIN valves

1. Design acc. to AD 2000 A4, ATEX 2014/34/EU, EN 12516.
2. Inspection and test acc. to EN 12266
3. Face to face dimension:  
For DN15-DN100, acc. to EN 558-1, G1;  
For DN125 and larger, acc. to EN 558-1, G3 .
4. Dimension of connection end flange acc. to EN 1092-1, From B1, BW end acc. to EN 12627.

## Design standards for ANSI valves

1. Design acc. to ASME B16.34.
2. Inspection and test acc. to API 598.
3. Face to face dimension acc. to ASME B16.10 .
4. Dimension of connection end flange acc. to ASME B16.5, BW end acc. to ASME B16.25.

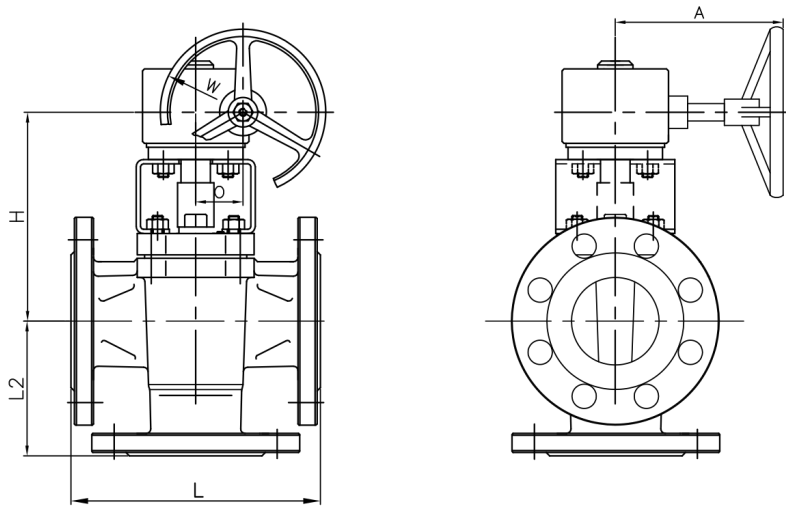
# FLEU 3-way sleeved plug valves Dimension List



Dimension list(mm)

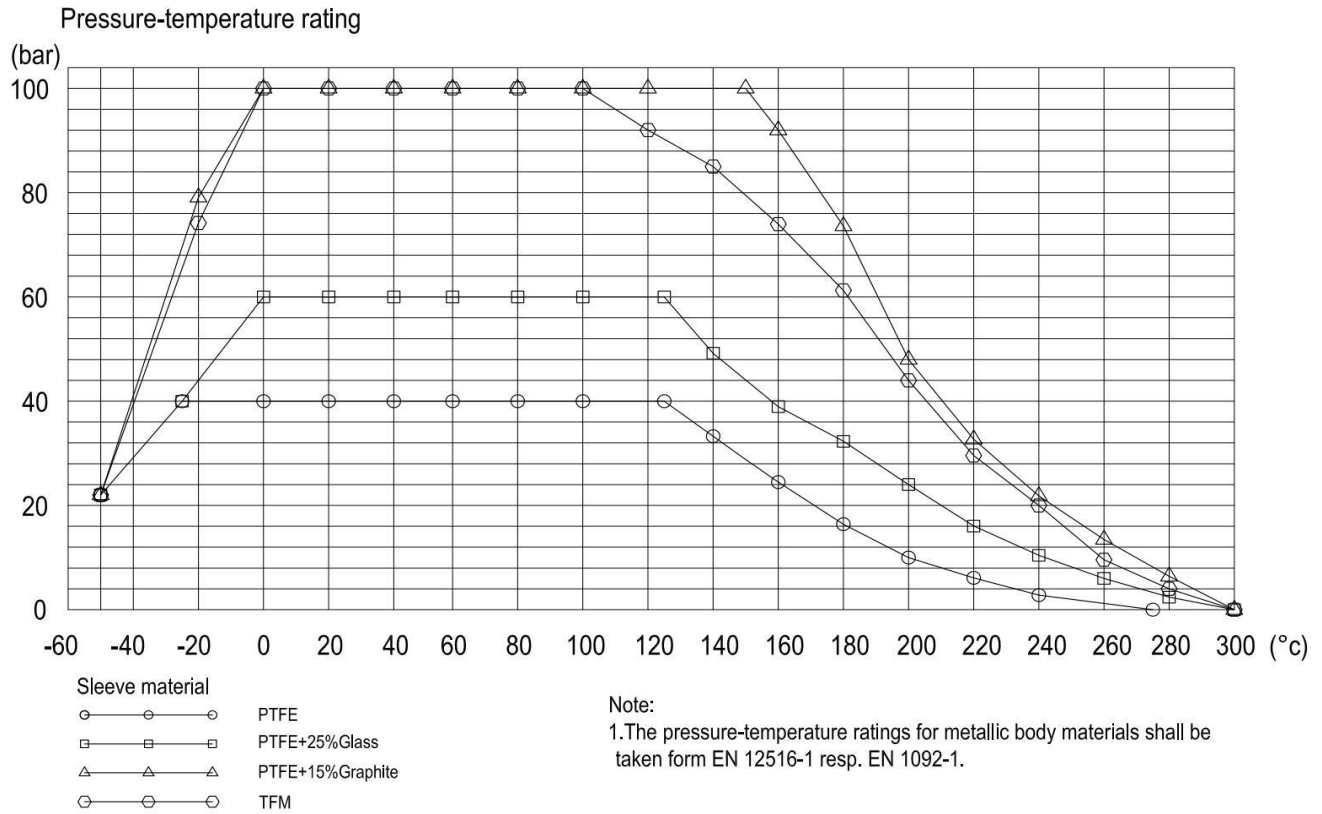
PN16-40	100	350	175	550	170	F10	42	21	35.8	21	30
	80	310	155	480	161	F10	39	19	29.8	19	23.5
	50	230	115	480	147	F07	38	19	29.8	19	13
	40	200	100	390	135	F07	34	17	24	14	8.5
	25	160	80	285	122	F05	30	15	18	14	4.5
	20	150	75	200	105	F05	30	15	11.8	9	4
	15	130	65	200	105	F05	30	15	11.8	9	3.5
150 Lbs	4"	229	114.5	550	170	F10	42	21	35.8	21	25.5
	3"	203	101.5	480	161	F10	39	19	29.8	19	20
	2"	178	89	480	147	F07	38	19	29.8	19	11
	1 1/2"	165	82.5	390	135	F07	34	17	24	14	7.2
	1"	127	63.5	285	122	F05	30	15	18	14	3.8
	3/4"	117	58.5	200	105	F05	30	15	11.8	9	3.4
	1/2"	108	54	200	105	F05	30	15	11.8	9	3
300 Lbs	4"	305	152.5	550	170	F10	42	21	35.8	21	26.8
	3"	282	141	480	161	F10	39	19	29.8	19	21
	2"	216	108	480	147	F07	38	19	29.8	19	11.6
	1 1/2"	190	95	390	135	F07	34	17	24	14	7.6
	1"	165	82.5	285	122	F05	30	15	18	14	4
	3/4"	152	76	200	105	F05	30	15	11.8	9	3.6
	1/2"	140	70	200	105	F05	30	15	11.8	9	3.2
PN(Class)	DN(Size)	L	L2	W	H≈	DIN EN ISO 5211	H1≈	H2	D	SW	Weight(Kg)=
									Stem end		

# FLEU 3-way sleeved plug valves Dimension List



Dimension list(mm)

PN16-40	600	508	/	500	1020	180	520	F30	625
	500	457	/	500	910	180	520	F30	405
	450	432	/	500	820	180	520	F30	320
	400	406	/	500	675	137.5	465	F25	255
	350	381	/	500	610	137.5	465	F25	185
	300	356	325	500	535	117.5	465	F16	125
	250	330	275	400	475	117.5	465	F16	88
	200	292	220	350	385	96.5	350	F16	65
	150	267	200	320	365	84	290	F12	48
125	254	162	250	265	84	290	F12	22.5	
150 Lbs	24"	1067	/	500	1020	180	520	F30	595
	20"	914	/	500	910	180	520	F30	395
	18"	864	/	500	820	180	520	F30	365
	16"	762	/	500	675	137.5	465	F25	340
	14"	686	/	500	610	137.5	465	F25	325
	12"	356	349	500	535	117.5	465	F16	305
	10"	330	311	400	475	117.5	465	F16	195
	8"	292	228	350	385	96.5	350	F16	115
	6"	267	197	320	365	84	290	F12	52
5"	254	178	250	265	84	290	F12	32	
300 Lbs	16"	838	/	500	675	137.5	465	F25	365
	14"	762	/	500	610	137.5	465	F25	355
	12"	502	356	500	535	117.5	465	F16	325
	10"	457	311	400	475	117.5	465	F16	255
	8"	418	254	350	385	96.5	350	F16	145
	6"	403	216	320	365	84	290	F12	65
5"	325	163	250	265	84	290	F12	40	
PN(Class)	DN(Size)	L	L2	W	H	O	A	DIN EN ISO 5211	Weight(Kg)



### Max. torque & opening torque

Size DN	PTFE Sleeve			PTFE+25% Glass			PTFE+15% Graphite		
	Max.	10 Bar	40 Bar	Max.	10 Bar	40 Bar	Max.	10 Bar	40 Bar
15	120	33	33	120	40	40	120	40	40
20	120	33	33	120	40	40	120	40	40
25	180	60	60	180	70	70	180	70	70
40	260	95	95	260	110	110	260	110	110
50	600	150	150	600	180	180	600	180	180
80	600	220	220	600	260	260	600	260	260
100	900	280	280	900	330	330	900	330	330
125	1200	400	400	1200	460	460	1200	460	460
150	1600	630	630	1600	730	730	1600	730	730
200	2600	960	960	2600	1100	1100	2600	1100	1100
250	3400	1200	1200	3400	1380	1380	3400	1380	1380
300	5500	2080	2080	5500	2390	2390	5500	2390	2390
350	12000	4400	4400	12000	5060	5060	12000	5060	5060
400	12000	4400	4400	12000	5060	5060	12000	5060	5060
450	14000	5120	5120	14000	5890	5890	14000	5890	5890
500	17000	6000	6000	17000	6900	6900	17000	6900	6900
600	17000	6000	6000	17000	6900	6900	17000	6900	6900