

PN100

Design acc. :

AD 2000 A4

ATEX 2014/34/EU

API 602

Socket-welding :ANSI B16.11

Screwed end : DIN 259

Test and inspection : DIN EN12266.

Body : C22.8

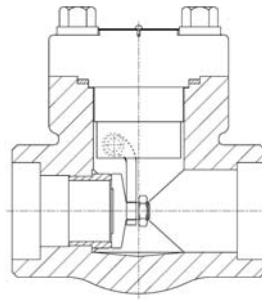


FIG : 446

Page 1

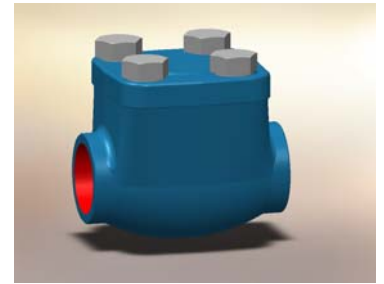


FIG : 446

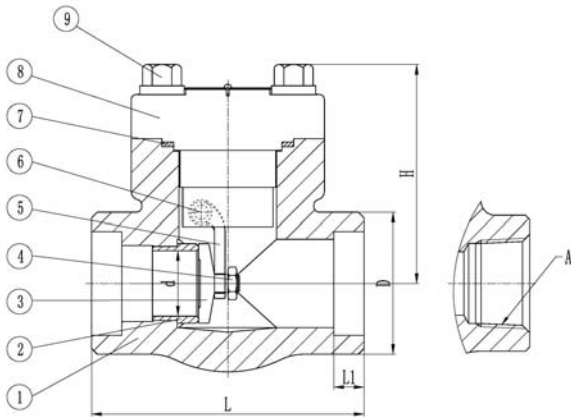


FIG.	PN	Material	Range
147.446	100	C22.8	DN10-DN50

Design acc. :
AD 2000 A4
ATEX 2014/34/EU
API 602
Socket-welding :ANSI B16.11
Screwed end : DIN 259
Test and inspection : EN12266.

Material list

NO.	Part	Material	
		FIG. 147.446	
1	Body	C22.8	
2	Seat	1.4021	
3	Disc	1.4021	
4	Nut	A194-2H	
5	Hinge	1.4401	
6	Pin	1.4301	
7	Gasket	1.4301+graphite	
8	Bonnet	C22.8	
9	Bolt	1.7225(GC)	

Dimension List

	Size	L	H	d	D	D1	L1	A
PN100	10	79	54.5	10	34	17.6	9.6	BSP 3/8
	15	79	54.5	13	34	21.7	9.6	BSP 1/2
	20	92	54.5	13	40	27.1	12.7	BSP 3/4
	25	111	72	17.5	49	33.8	12.7	BSP 1
	32	120	84	23	58	42.6	12.7	BSP 1 1/4
	40	120	94	28.5	64	48.6	12.7	BSP 1 1/2
	50	140	112	35	78	61.1	15.9	BSP 2